



Step-by-Step
Installation

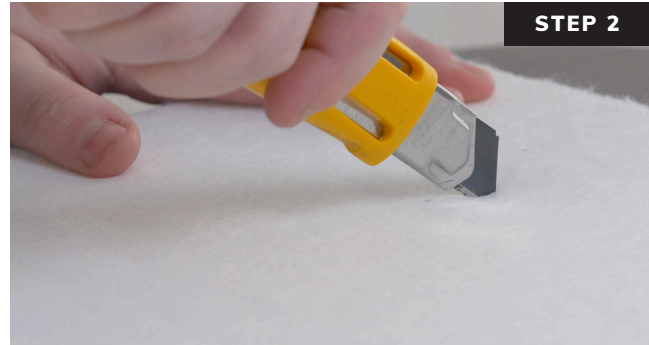
(RSO1-PET)
**Rotofast™ Polyester
Panel Snap-On Anchor**

Rotofast Polyester Panel Snap-On Anchors are a secure and fast solution for the installation of polyester panels.

Go to www.rotofast.com to see the Rotofast Polyester Panel Snap-On Anchor installation video.



Measure and mark the location where panel will be placed and mark the orientation on the back of the panel.



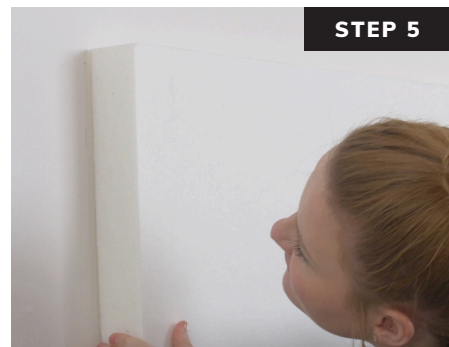
Make a cut about 1-1/2" long by 3/4" deep at each anchor location. It may take a few passes to complete the cut.



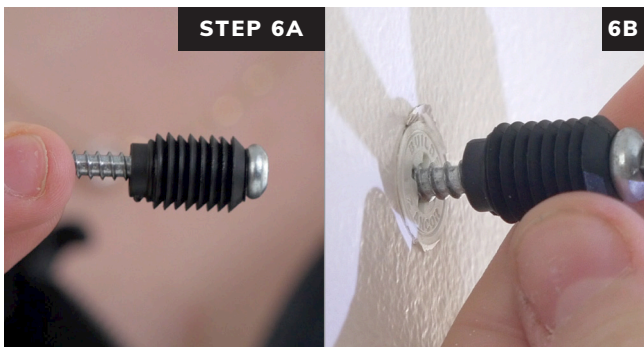
Screw Rotofast Snap-On Anchors into back of the panel using the Rotofast driver tool. Do not over-tighten.



Insert reusable marking plugs into the Snap-On anchors.



Push panel against wall to mark anchor locations.



Screw ratchets to wall at marked locations. Flat end of ratchet goes against the wall, curved end faces out.

#8 screws recommended
*Hollow wall anchors are recommended for drywall applications.



Firmly strike panel onto ratchets to complete the installation.

Ask your panel manufacturer or Rotofast representative for recommended anchor locations and quantities per panel.

Rotofast
Incorporated

70 Milton Street
Sydney, Nova Scotia
Canada B1P 4L8

Toll Free - USA & Canada
1-888-545-7444

International
00-1-902-578-2534

Email
info@rotofast.com

Website
www.rotofast.com