

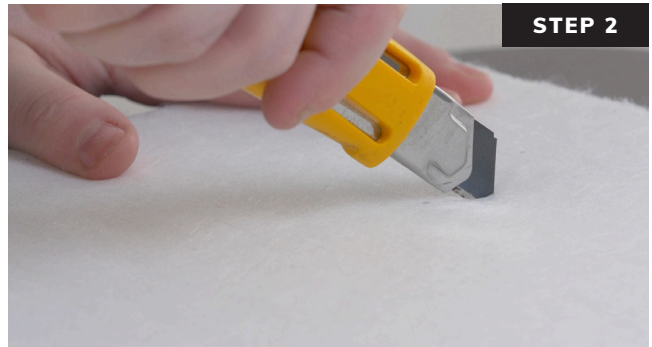
Rotofast Polyester Panel Snap-On Anchor/Z-CLIPs are a secure and fast solution for the installation of polyester panels.

Go to www.rotofast.com to see the Rotofast Polyester Panel Snap-On Anchor/Z-CLIP installation video.



STEP 1

Measure and mark the location where panel will be placed and mark the orientation on the back of the panel.



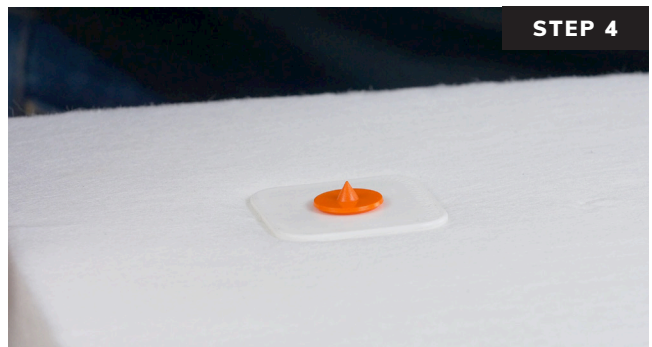
STEP 2

Make a cut about 1-1/2" long by 3/4" deep at each anchor location. It may take a few passes to complete the cut.



STEP 3

Screw Rotofast Snap-On Anchors into back of the panel using the Rotofast driver tool. Do not over-tighten.



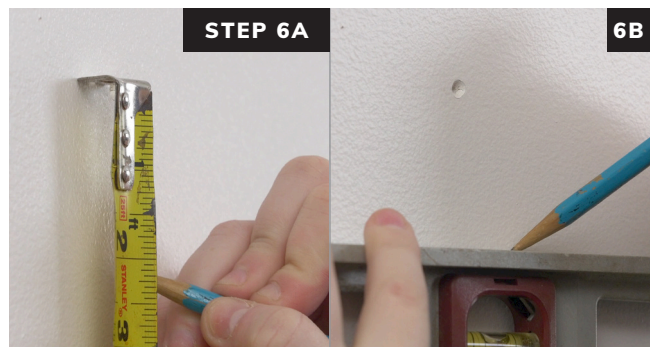
STEP 4

Insert reusable marking plugs into the Rotofast Snap-On anchors.



STEP 5

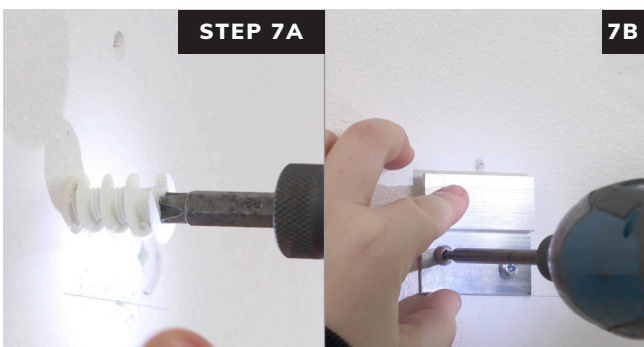
Push panel against wall to mark anchor locations.



STEP 6A

6B

Measure down 2" from each mark. Use a level to make a short line at this location.



STEP 7A

7B

Install each Z CLIP at these locations with the bottom of the clip lined up with the line you made.



STEP 8A

8B

Line up the panel. Slide down until you feel the flange contact the top of the Z CLIP. Push in on the panel and slide it down to engage the Z CLIPS. Make sure all clips are engaged to complete installation.

