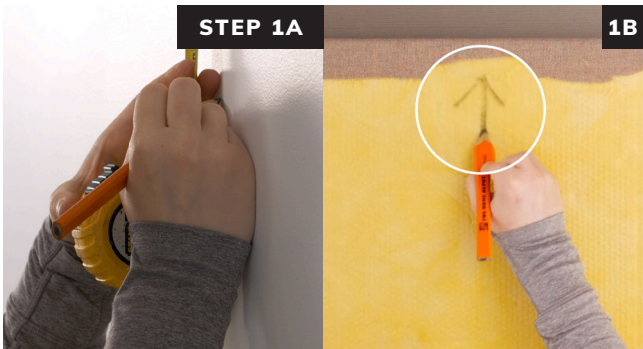
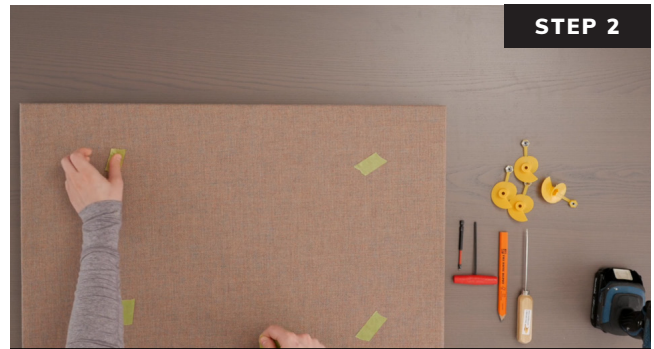


Rotofast Standard Anchors are a secure and fast solution for acoustical panel installation.  
See [rotofast.com](http://rotofast.com) for the Rotofast Standard Anchor installation video.



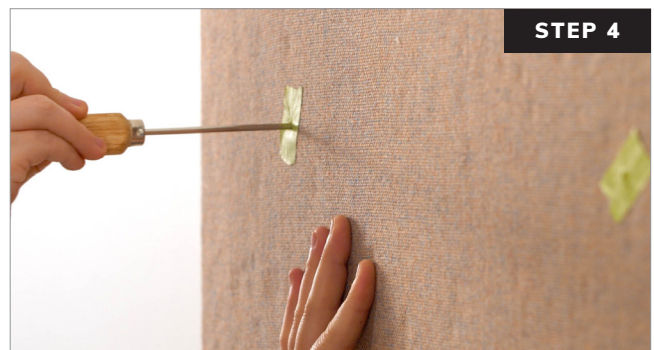
Measure and mark the location where panel will be placed and mark the orientation on the back of the panel.



Place painters tape on the face of the panel at the desired anchor locations.



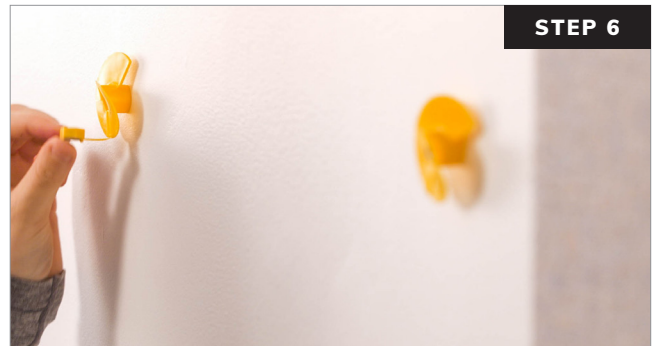
Push the scratch awl through the panel at the marked locations, keeping the scratch awl as straight as possible.



Place panel at marked location and use scratch awl to penetrate panel and mark substrate for anchor locations.  
**(For harder surfaces insert a nail into the hole and tap with a hammer to mark the substrate)**



Screw Rotofast Standard Anchor to wall at marked location. Make sure the anchor spins on the shaft of the screw but does not wobble.

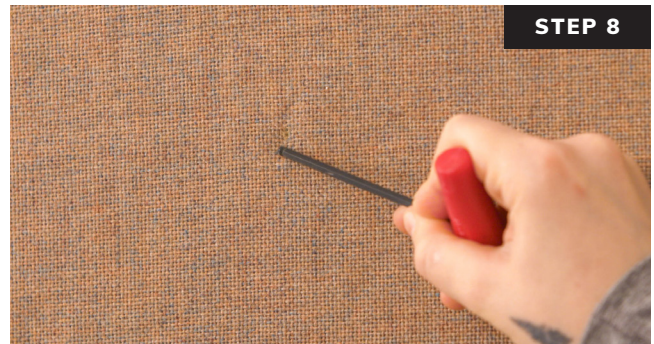


Flip arm and push hex insert firmly into center of the anchor.



Insert the installation tool through hole in painters tape. Feel and hear the installation tool engage with the insert. Turn the Rotofast anchor counter-clockwise (left) while firmly pushing the panel toward the wall.

**Note: fully engage the installation tool with the metal insert before turning.**



Remove the painters tape. Using the installation tool, lightly rub the weave of the fabric to close the hole.

