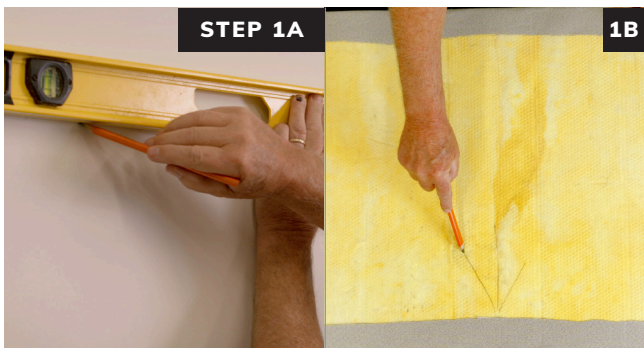




Step-by-Step
Installation

(R-EZ)
Rotofast™
EZ Clip

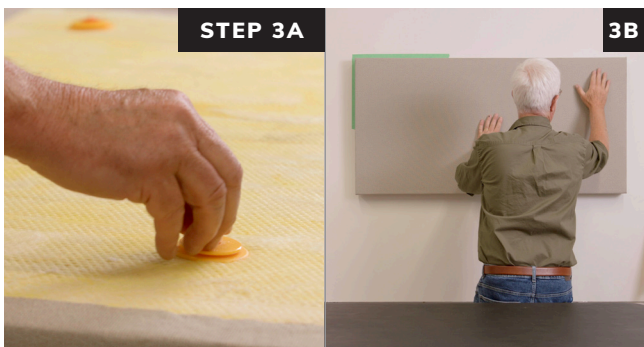
Rotofast EZ Clips are a secure, easily removable solution for acoustical panel installation.
See rotofast.com for the Rotofast EZ Clip installation video.



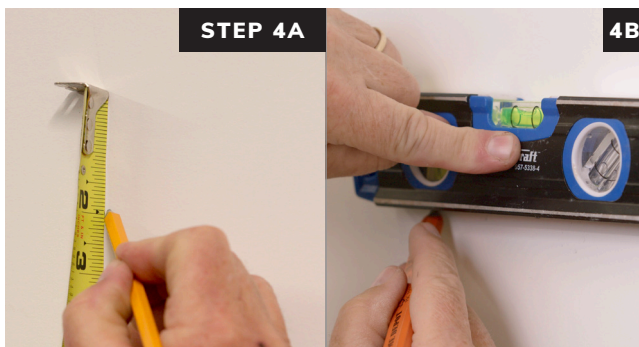
Measure and mark the location where panel will be placed. Also mark the orientation on the back of the panel.



Screw Rotofast EZ Clips into back of the panel using the Rotofast driver tool. Do not over-tighten. Make sure the flange is parallel to the back of the panel.



Insert reusable marking plugs into the EZ Clips. Push panel against wall to mark EZ Clip locations.



Measure down 2 inches from each mark and draw a level line at that location.



Install a Z bar at each level line, centered on the mark.
***Hollow wall anchors are recommended for drywall applications.**



Remove the marking plugs. Slide the panel down, engaging the EZ Clips with the Z bars.

Ask your panel manufacturer or Rotofast representative for recommended EZ Clip locations and quantities per panel.

